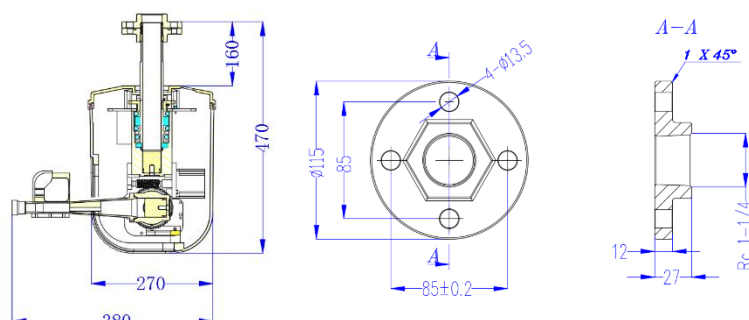


# ZDMS AUTO FIRE MONITOR

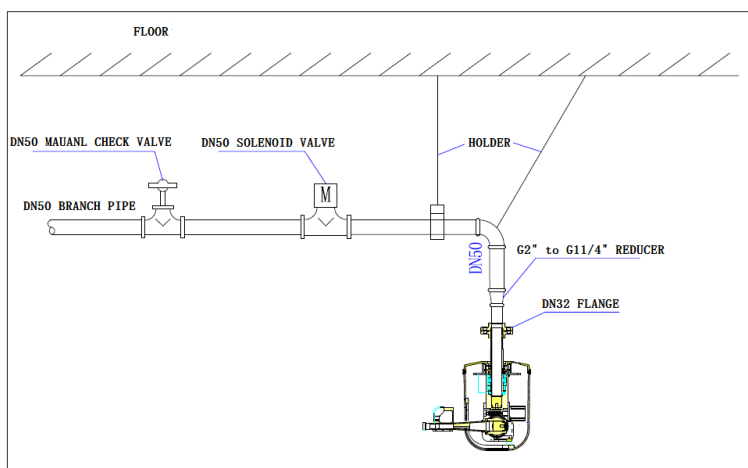
Automatic tracking and positioning jet device combines the infrared sensor, signal processing, communication control, computer and mechanical driven technology together in automatic fire protection systems. The monitor keep scanning protection zone, when fire occurs, position fire point, and then the central controller sends alarm signals starting the pump, opening solenoid valves, putting out the fire.

Technical Parameters		
Model	ZDMS0.6/5	ZDMS0.6/10
Flow Rate $\pm 8\%$ (L/s)	5	10
Nominal Working Pressure (Mpa)	0.6	
Jetting Radius Range (m)	34	39
Maximum Protection Radius (m)	30	35
Monitoring Radius (m)	40	40
Positioning time (s)	$\leq 30$	
Working Voltage (V)	12VDC	
stand-by power consumption	1W	
Installation Height (m)	6~15	
Horizontal rotating Angle ( $^{\circ}$ )	360 $^{\circ}$	
Vertical rotating Angle ( $^{\circ}$ )	-90~+30	
Working Temperature ( $^{\circ}\text{C}$ )	-10~+55	
Relative Humidity	$\leq 95\% \text{RH}$	
Connection	G1 $\frac{1}{4}$ " Female Thread	
Installation Type	Pendent	
Device Rotation Radius	350mm	

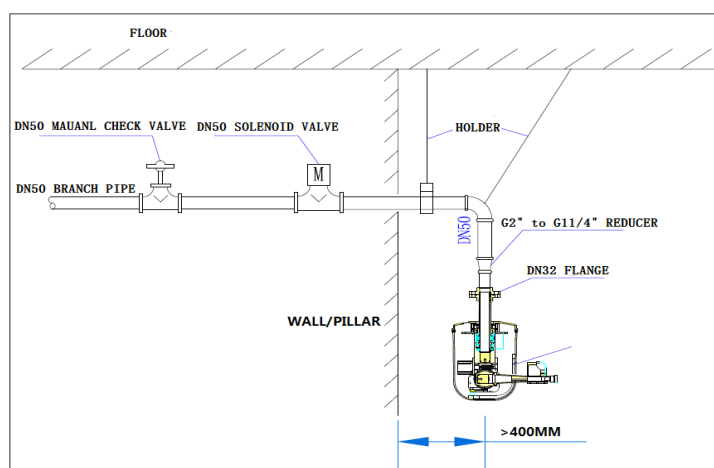


## INSTALLATION INSTRUCTION

### PEDENT



### THROUGH WALL

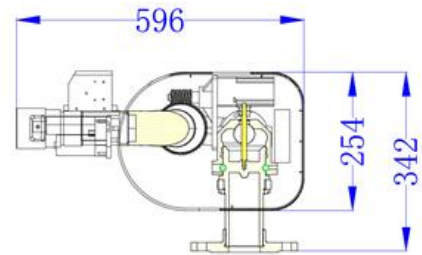


Technical Parameters		
Model	ZDMS0.8/20	ZDMS0.8/30
Flow Rate±8% (L/s)	20	30
Nominal Working Pressure (Mpa)	0.8	
Jetting Radius Range (m)	56	62
Maximum Protection Radius (m)	50	55
Monitoring Radius (m)	65	65
Positioning time (s)	≤60	
Working Voltage (V)	24VDC	
stand-by power consumption	1W	
Installation Height (m)	8~15	
Horizontal rotating Angle (°)	360°	
Vertical rotating Angle (°)	-90~+30	
Working Temperature (°C)	-10~+55	
Relative Humidity	≤95%RH	
Connection	Flange DN80	
Installation Type	Pendent	
Device Rotation Radius	750mm	

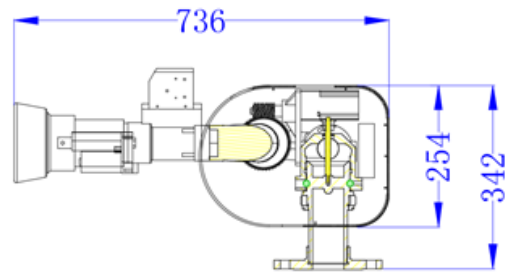


ZDMS0.8/20S

ZDMS0.8/30S



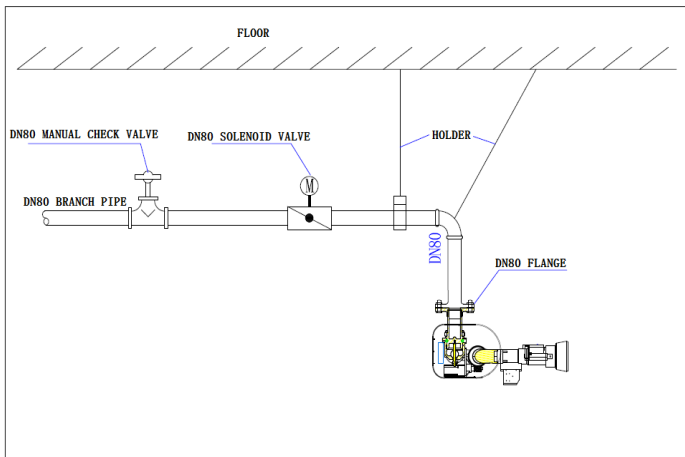
ZDMS0.8/20S



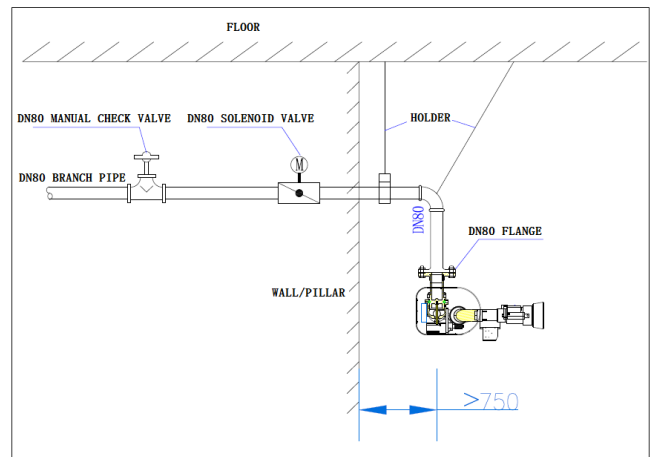
ZDMS0.8/30S

## INSTALLATION INSTRUCTION

### PEDENT



### THROUGH WALL



# SYSTEM COMPONENTS

## DECODING BOX



Technical Parameters	
MODEL	ZDM-JM01
WORKING VOLTAGE (V)	220VAC 50Hz
COMUNICATION STANDARD	RS485
SIZE (mm)	230*180*80
INSTALLATION	2 METER RANGE WITHIN FIRE MONITOR

### FUNCTION:

- ⊙ Provides stable low voltage power for fire monitor
- ⊙ Control branch pipe solenoid valve opening and closing
- ⊙ Communication transfer for fire monitor and field control box
- ⊙ Video signal output transfer

## FIELD CONTROL BOX



Technical Parameters	
MODEL	ZDM-XK01
WORKING VOLTAGE (V)	220VAC 50Hz
COMUNICATION STANDARD	RS485、CAN BUS
SIZE (mm)	290*200*80
INSTALLATION	1.2~1.5m above ground

### FUNCTION:

- ⊙ On-site fire monitor、control unit power management
- ⊙ Transfer between fire monitor and central control cabinet.
- ⊙ On-site manually control fire monitor to start watering
- ⊙ Output field alarm signal

## VIDEO CENTRALIZED CONTROL CABINET



Technical Parameters	
MODEL	ZDM-ZD01
WORKING VOLTAGE (V)	220VAC 50Hz
COMUNICATION STANDARD	CAN BUS
SIZE (mm)	950*600*1280
INSTALLATION	INSIDE FIRE CONTROL ROOM

### FUNCTION:

- ⊙ Automatic tracking and positioning jet device output power manage
- ⊙ No more than 200 units device bus communication with center system
- ⊙ Automatic tracking and positioning jet device backup power manage
- ⊙ Automatic tracking and positioning jet device video manage



ZDMS0.8/30S/EX



ZDMS0.8/40S/EX

MODEL	Nominal Working Pressure (Mpa)	Flow Rate (L/S)	Maximum Protection Radius (M)	Monitoring Radius (M)	Positioning time (S)	Connection (Flange)	Weight (KGS)
ZDMS0.8/40S/EX	0.8	30	55	80	60	DN80	46
ZDMS0.8/30S/EX	0.8	40	60	80	60	DN80	46