

Portables line

# ICON PETROL



CONTACT US

CERTIFICATION: CE UNI EN ISO 9001:2015





## Technical data

Type of gas	Breathing air EN 12021 - Nitrox 40% max O2 - Helium - Nitrogen
Intake pressure	Atmospheric max 300 mbar
Nominal pressure	230 bar / 330 bar
Filling pressure	230 bar / 330 bar
Max working pressure	330 bar
Permissible ambient temperature range	-10° C ÷ +40° C
Permissible altitude	0 ÷ 2.000 m SLM
Max permissible tilt	6°
Design	Open
Oil	Synthetic Coltri Oil ST 755
Oil change interval	Every year / 1.000 h
Frame	Steel 1,5 mm thickness - colour RAL 9005 - Powder coating painting - scratch proof

## Compressor

	100 SH	100 SK
<b>Charging rate</b> <small>Measured during 10 liters cylinder filling from 0-200 bar tolerance +/- 5% at + 20 ° C ambient temperature.</small>	100 l/min	100 l/min
<b>Purification System</b>	Eco-filter	
<b>Cooling air flow, min.</b>	990 m <sup>3</sup> /h	
<b>Weight</b> <small>Standard model. Weight and dimensions may vary depending on accessories.</small>	37 kg 81.8 lb	37 kg 81.8 lb
<b>Dimensions (W x D x H)</b>	78 x 32 x 35 cm - 30.7 x 12.5 x 13.7 in	

## Engine

	100 SH	100 SK
<b>Power</b>	4,3 kW, 5.7 Hp	4,1 kW, 5.5 Hp
<b>Type</b>	Honda HP 200 petrol	Kohler SH 265 petrol
<b>Speed (RPM)</b>	3.600 1/min	
<b>Protection class</b>	IP55 (TEFC)	

## Dimensions

Width 78 cm (30.70")

Depth 32 cm (12.59")

Height 35 cm (13.77")

## Dry weight

**ICON 100 SH**

37 kg (81.6 lb)

**ICON 100 SK**

37 kg (81.6 lb)

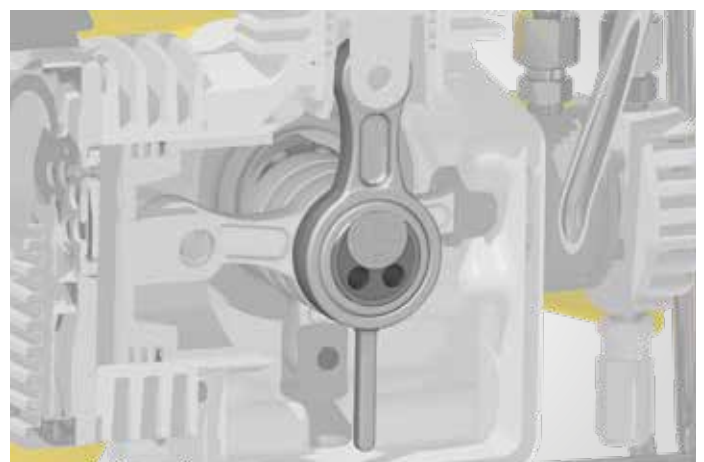


## Machine parts

- |                     |                          |                                 |
|---------------------|--------------------------|---------------------------------|
| 1 Frame             | 7 Safety mesh            | 13 Fuel tank                    |
| 2 Pressure gauge    | 8 Anti-vibration devices | 14 Combustion engine air filter |
| 3 Engine motor      | 9 Cooling fan            | 15 Combustion engine muffler    |
| 4 Pumping unit      | 10 Belt                  | 16 Safety valve                 |
| 5 Oil filler cap    | 11 Purification system   | 17 Condensate discharge         |
| 6 Intake air filter | 12 Condensate separator  |                                 |



**1.**  
 Splash lubrication  
 with rod pin  
 immersed in oil





**2.**  
Suction filter:  
10 μ micron



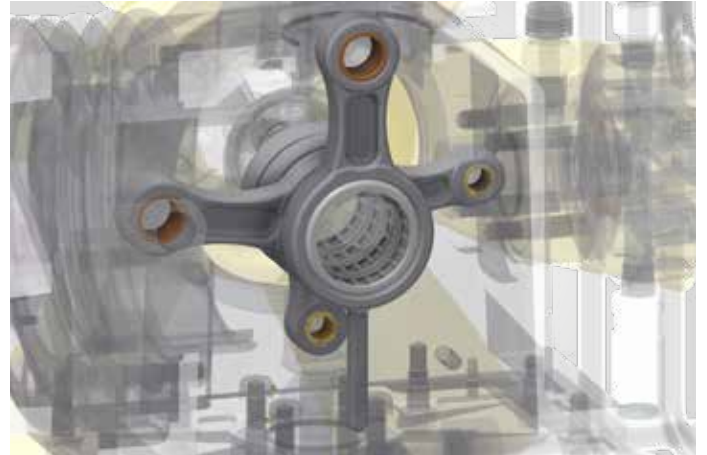
**3.**  
Pipes, fittings and nuts  
in stainless steel AISI 316



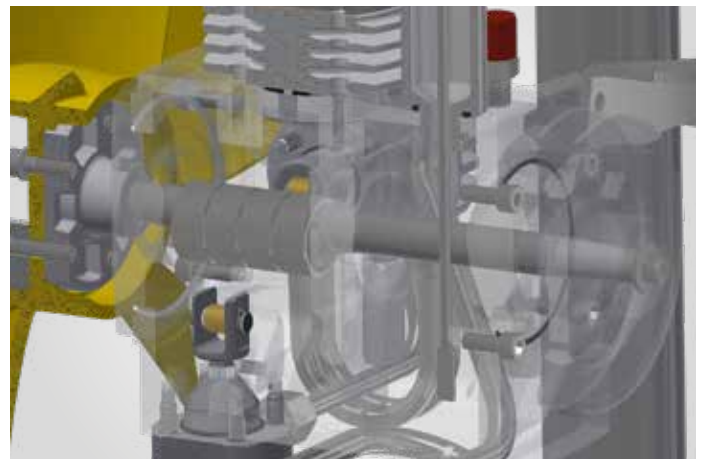
**4.**  
Aluminium monoblock  
machined on a horizontal  
machining center to  
ensure maximum precision



**5.**  
**Forged aluminum  
 connecting rods**



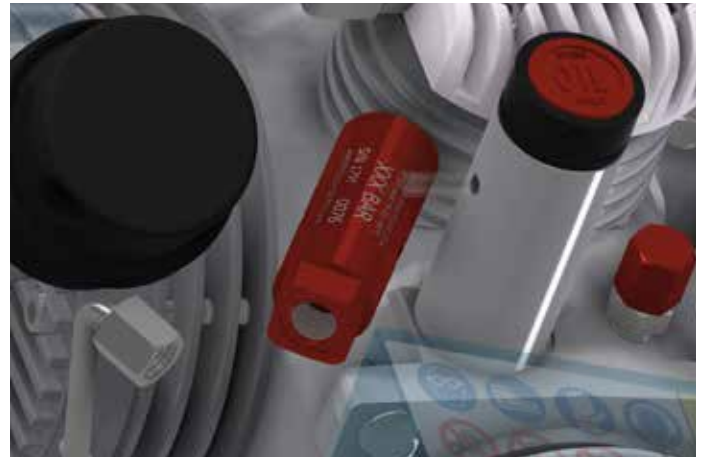
**6.**  
**Forged steel crankshaft  
 with hardened rings**



**7.**  
**Safety valve  
 on the third stage**



## 8. Safety valve PED certified final



## 9. CE certification

<b>COLTRI</b> COMPRESSORS		AEROTECNICA COLTRI S.P.A. Via dei Colli Storici, 177, 25015 Desenzano del Garda (BS), Italia		<b>CE</b>
MODEL	Icon Petrol			
S/N	YEAR	WEIGHT	KG	LB
MOTOR				
KW	VOLT	HZ	RPM	PUMPING GROUP
MAX WORKING PRESSURE BAR			PSI	
SOUND PRESSURE LEVEL LPA dB				MADE IN ITALY





# Compressor block MCH 6

	100 SH	100 SK
<b>Charging rate</b>		
Measured during 10 liters cylinder filling from 0-200 bar tolerance +/- 5% at + 20 ° C ambient temperature.	100 l/min	100 l/min
<b>Speed RPM</b>	2.800 1/min	
<b>Number of stages</b>	4	
<b>Number of cylinders</b>	4	
<b>Cylinder bore 1st stage</b>	78 mm	
<b>Cylinder bore 2nd stage</b>	38 mm	
<b>Cylinder bore 3rd stage</b>	19 mm	
<b>Cylinder bore 4th stage</b>	9,7 mm	
<b>Stroke</b>	13,5 mm	
<b>Direction of rotation (from flywheel side)</b>	Right - clockwise	
<b>Drive type</b>	V-belt A type	
<b>Intermediate pressure 1st stage</b>	~ 4,5 bar	
<b>Intermediate pressure 2nd stage</b>	~ 16 bar	
<b>Intermediate pressure 3rd stage</b>	~ 75 bar	
<b>Amount of oil</b>	360 cc/ml	
<b>Intake pressure</b>	1,3 bar <sub>a</sub> – 300 millibar	



# Standard equipment

## Purification system ECO-FILTER

ECO-FILTER disposable cartridge



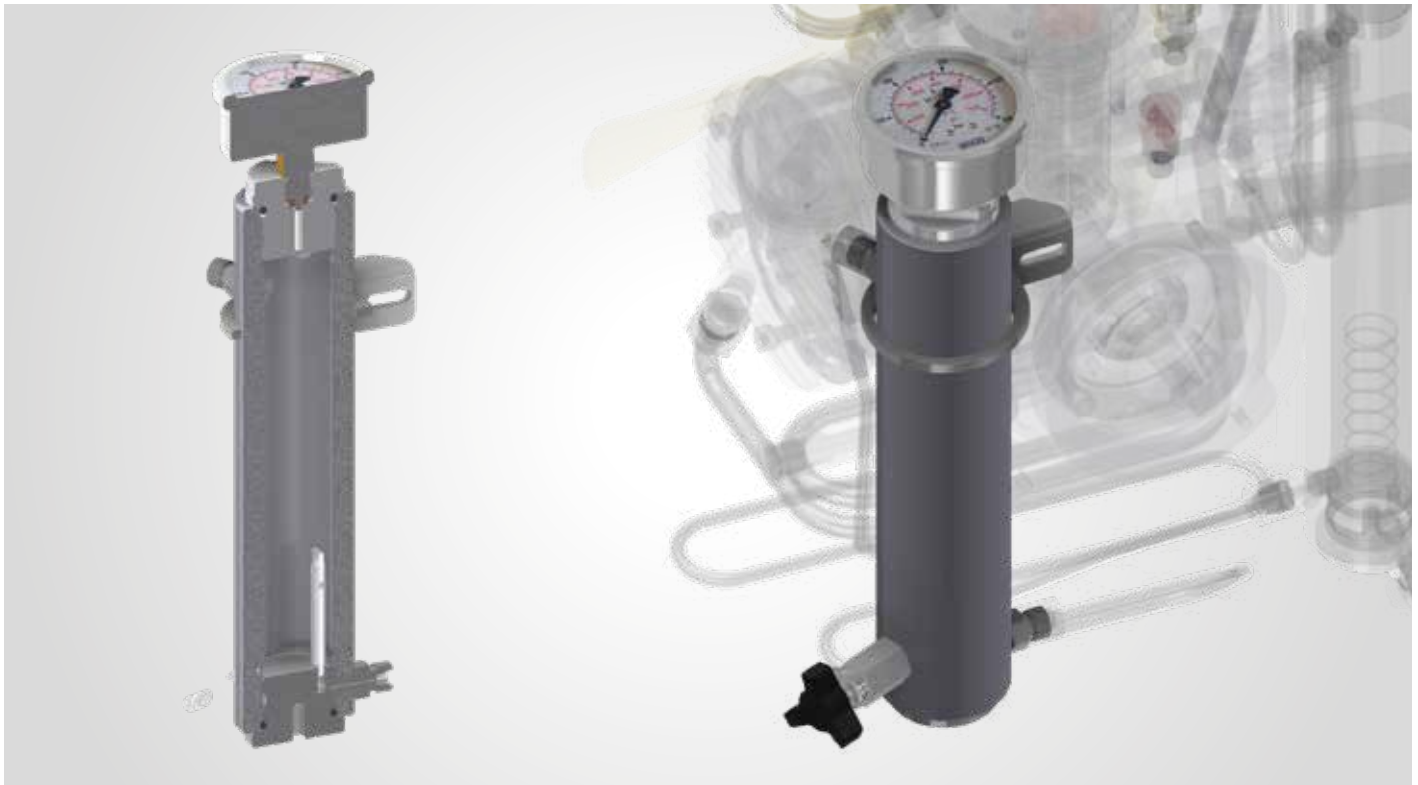
Purification system	Eco-Filter
Operating pressure (Standard)	230 bar / 300 bar
Operating pressure max. (PS)	360 bar
Processable air capacity (air inlet temperature in the filter 20° C at 300 bar) <sup>1</sup>	210 m <sup>3</sup>

<sup>1</sup> When using a filter cartridge without HOPCALITE CO CATALYST.

When using a cartridge with CO-removal, the processable air capacity is reduced by ca. 20%.

## Separator system

- Final separator for removal of oil/water condensate
- Final safety valve, mounted on the separator housing



Contamination	Maximum content as per DIN EN 12021:2014	Air quality*
H <sub>2</sub> O	25 mg/m <sup>3</sup>	≤ 10 mg/m <sup>3</sup>
CO	5 ppm(v)	≤ 4
CO <sub>2</sub>	500 ppm(v)	≤ 500
Oil	0,5 mg/m <sup>3</sup>	≤ 0,5 mg/m <sup>3</sup>

\* Measured at our facility using ASCO HORA 160 ANALYZER.

1 Only with special filter cartridge with HOPCALITE CO CATALYST. and up to a maximum concentration of 25 ppm CO in intake air.  
The compressed clean breathing air then contains a maximum of 5 ppm CO.

2 The level of CO<sub>2</sub> in the intake air must not exceed the maximum level of CO<sub>2</sub> as per EN 12021:2014

3 Reported values exceed ISO 8573-1 standards.

## Filling connections

1 filling connection to choose from: DIN 232 bar - INT and DIN 300 bar.



Filling connection DIN 232 bar  
**COD. 6-05-024**



Filling connection INT  
**COD. 6-05-025**

<b>Filling device</b>	<b>DIN 232 bar</b>
<b>Nominal pressure (PN)</b>	250 bar
<b>Valve design</b>	Filling valve with cylinder connector G 5/8" according to EN 144-2 and 477 PN232



Filling connection DIN 300 bar  
**COD. 6-05-024/300**

<b>Filling device</b>	<b>DIN 300 bar</b>
<b>Nominal pressure (PN)</b>	330 bar
<b>Valve design</b>	Filling valve with integrated ventilation, with cylinder connector G 5/8" according to EN 144-2 and 477 PN232

# Optional

## Autostop

Compressor automatically shuts off when it reaches final pressure.

Composed of:

1 x Pressure switch

- 230 bar - COD. SC000521/232  
(Safety valve 250 bar)
- 300 bar - COD. SC000521/300  
(Safety valve 330 bar)



ASSEMBLY INSTRUCTIONS



COD. SC000521/232 - SC000521/300

## Digital hour meter












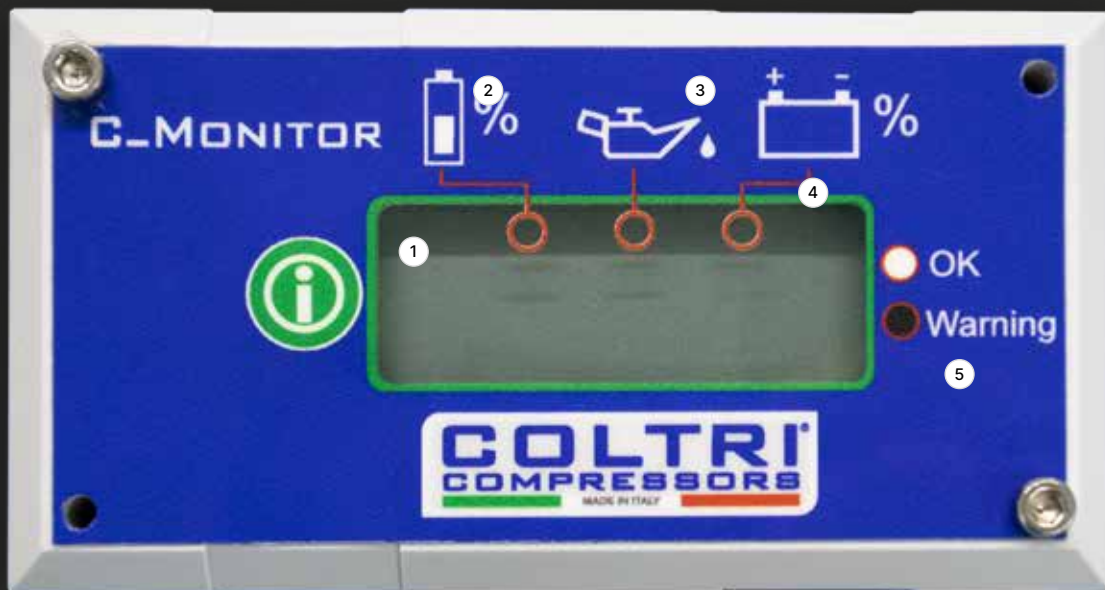
COD. 13-04-0210



# C - Monitor

**Final filter monitoring system, oil change and technical interface.**

The interface consists of an LCD display, a button  and two indicators (, ). The decimal points next to the digits are indicator lights to indicate alarms or warnings in progress. Each dot is associated with an explanatory icon (, , ). The icon  indicates an alarm condition while the symbol  indicates normal operation. Press the button  to scroll through the different functions of the menu. When pressed, the function is displayed the function and after two 2 seconds the related data.



COD. SC001200

- 1 Display
- 3 Service indication
- 5 Operation indicator
- 2 Cartridge saturation
- 4 Battery charge level

## Remote suction hose kit

1/2" adapter.

Hose length 3 meters.

Tube diameter 20 mm.



COD. HC010302

## Suction filter cartridge



COD. SC000345

## Pressure maintaining valve

Mandatory use of DRV filling connection



COD. 6-05-015-VMP-R

# Aerotecnica Coltri S.p.A.

Via dei Colli Storici, 177  
25015 Desenzano del Garda  
Brescia - Italy

Ph. +39 030 9910301  
+39 030 9910297

[info@coltri.com](mailto:info@coltri.com)

DT-TDS-ICONPETROL-21-V2



[www.blauer.engel.de/uz14a](http://www.blauer.engel.de/uz14a)

Stampato su carta riciclata  
Printed on recycled paper.  
Please collect used paper for recycling.



[coltri.com](http://coltri.com)



**COLTRI**  
THE ITALIAN COMPRESSOR